

SC/SW SERIES

CLEANLITE

ENCLOSED INDUSTRIAL FLUORESCENT
FOR DRY AND DAMP OR WET LOCATIONS

1 OR 2 LAMP

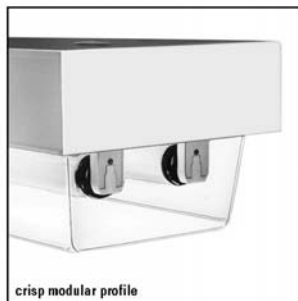
T8 OR T12

- C.S.A. Listed for damp and wet location.
- For industrial or commercial applications.
- Crisp modular design.
- Convenient 8" width.
- Available in 4ft lengths only
- Continuous closed-cell gasketing at all seal points.
- Smooth one-piece water-clear acrylic lens.
- Lock-tight cam-action latches.
- Optional water-tight hub (SW only)

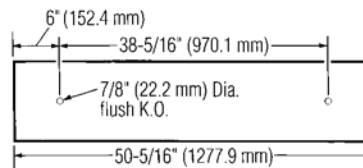
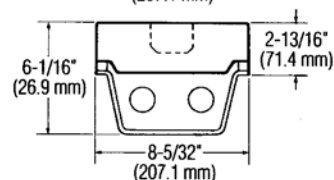
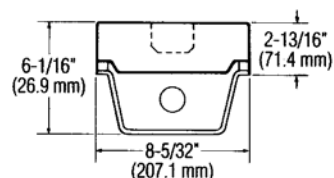


Do not flush mount HO units. Should be suspended minimum 1-1/2" (38.1mm) from surface.

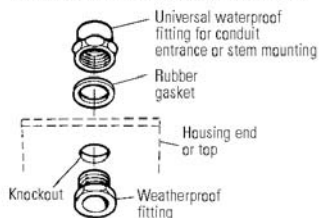
MOUNTING METHODS/FEATURES



DIMENSIONS



WATER TIGHT HUB KIT Cat. No. GWHB CSP



FIXTURE TYPE

VOLTS

JOB INFORMATION:	

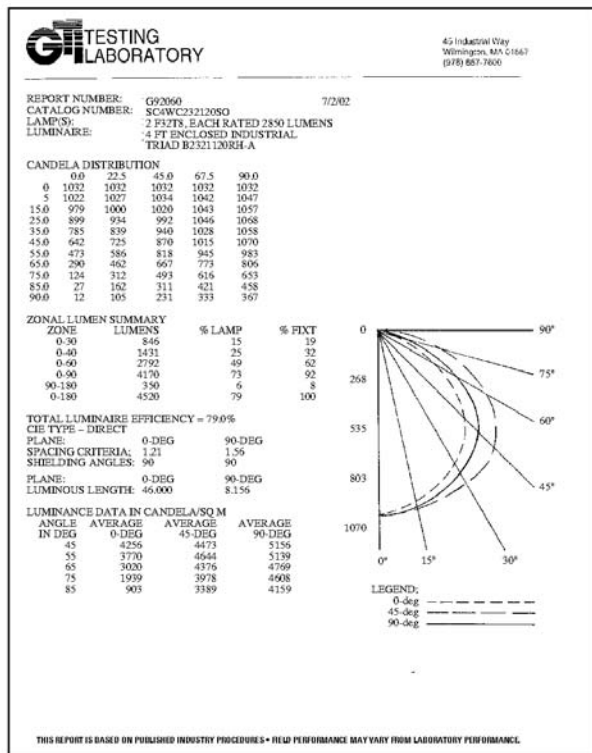
CFI FLUORESCENT

SC/SW SERIES

CLEANLITE ENCLOSED INDUSTRIAL FLUORESCENT

PHOTOMETRY

MODEL NO. SW4C232120SO



coefficients of utilization — zonal cavity method

RF	20			20			20		
RC	80			50			30		
RW	70	50	30	50	30	10	50	30	10
1	80	75	71	71	68	65	67	64	62
2	71	64	58	60	56	51	57	53	49
3	64	56	49	52	47	42	49	44	40
4	58	49	42	46	40	35	43	38	34
5	53	43	36	41	34	30	39	33	29
6	49	39	31	37	30	26	35	29	25
7	45	35	28	33	27	22	31	26	22
8	42	32	25	30	24	20	29	23	19
9	39	29	22	28	22	18	26	21	17
10	37	27	20	25	20	16	24	19	16

ORDERING INFORMATION Explanation of Catalogue Number Example: SC4C232120SO

SC	4	C	2	32	120	SO	
LUMINAIRE TYPE: SC=Damp location SW=Wet location	LUMINAIRE LENGTH 4=4'		NUMBER OF LAMP IN A CROSS-SECTION: 1 2	LAMP TYPE: 32=T8 4' 34=T12 4' 48 HO=T8 OR T12 HO 4' 96 HO=T8 OR T12 HO 8'	VOLTAGE: 120, 277 347	BALLAST TYPE: LE† Mag. T12 Energy Saving SO 1 or 2 Lamp Elect. T8 SR 1 or 2 Lamp Elect. T8 HO	OPTIONS: Add appropriate suffix to catalog no.

† Not available for 4' T12 HO, leave blank for standard ballast mag.

OPTIONS/ACCESSORIES

TAMPER-PROOF LATCHES Zinc cam-latches with spanner head screws. Add Suffix **9** to catalogue number.

WATER TIGHT KITS For SW type luminaires only. Hub kit for top or end conduit entry. One kit supplied with luminaires. Order catalogue number: **WHP0001**.

LENS Smooth one-piece water-clear lens is standard. For high impact acrylic lens, suffix **(DR)**.

For opal lens, add **(SW)**. For lexan **(SR)**.

COLD WEATHER BALLASTS HO standard with -17°F (-27°C) ballasts. For RS type luminaires add suffix **SR** (T8 electronic) **CW** (T12 magnetic), to catalogue number.

SPECIFICATIONS:

MATERIALS: Chassis shall be 20 gauge steel.

WIREWAY COVER: Full length retained by fasteners for quick removal and convenient servicing.

LENS: One-piece flanged lens enclosure molded from .125" thick smooth water-clear virgin acrylic. Lens enclosure shall be heavy-duty vapor tight enclosed and gasketed with closed-cell foam gasketing (permanently attached to fixture housing).

LATCHES: Lock-tight cam action.

FINISH: Chassis shall be phosphate primed and finished in baked white acrylic enamel for not less than 86% reflectivity.

ELECTRICAL: Instant or rapid start HPF, LE (energy saving where applicable) thermally protected class "P" ballast C.B.M. certified by E.T.L. if K.O. is within 3" of ballast, use wire suitable for at least 90°.

LABELS: Listed by CSA.

We reserve the right to change, materials and finish in any way that will not alter installed appearance or reduce function and performance.

CFI FLUORESCENT

C/NLITE

525 EDUCATION RD., CORNWALL, ONTARIO K6H 6C7
TEL.: (613) 938-6221 • FAX: (613) 938-0961